



无线智联 智慧出行 本地媒体 在线音乐 在线视频 DSP音效 声控交互 记录仪 无缝交互 AHD IN CE认证 FCC认证 SRRC认证 RoHS认证

授權經銷商：

AUTHORIZED DEALER

執行標準：

EXECUTIVE STANDARD

GB 4943.1-2011

适用于
A1、A3、A4、A5、A6、A7
A8、Q2L、Q3、Q5、Q5L、Q7、Q8

車載無線智聯終端

說明書



Car mounted wireless intelligent
connection terminal

敬請注意:

尊敬的用戶您好,在您安裝好本系統後針對部分沒有AUX的車型需要通過原車藍牙傳輸聲音的時候請先進入原車系統藍牙電話頁面,利用車機「藍牙電話」主動搜索或等待搜索本系統的藍牙設備「DC_AUDIO_BT_****」,待本系統藍牙與車載藍牙電話連接成功以後進入到原車藍牙音頻功能,再按相應按鍵切換到系統頁面,開始後續操作。

Please note:

Dear user, after installing this system, for some models without AUX that require sound transmission through the original car Bluetooth, please first enter the original car system Bluetooth phone page and use the car's "Bluetooth phone" to actively search or wait for the Bluetooth device "DC_AUDIO_BT_****" of this system. After the Bluetooth of this system is successfully connected to the car's Bluetooth phone, enter the original car Bluetooth audio function, Press the corresponding button again to switch to the system page and start subsequent operations.

免責聲明 Disclaimer:

Apple、Iphone、Carplay和Carplay標誌是蘋果公司的註冊商標和所有權

Apple, iPhone, Carplay, and the Carplay logo are registered trademarks and ownership of Apple Corporation

Android、Google Maps、Android auto和Waze是Google公司的註冊商標和所有權

Android, Google Maps, Android auto, and Waze are registered trademarks and ownership of Google Corporation

百度、Carlife和carlife標誌是百度公司的註冊商標和所有權

Baidu, Carlife, and the Carlife logo are registered trademarks and ownership of Baidu Company

華為、華為hicar和hicar標誌是華為公司的註冊商標和所有權

Huawei, Huawei Hicar, and the Hicar logo are registered trademarks and ownership of Huawei Corporation

NO.1

參數&規格 / Box parameters and warranty

產品外形尺寸 Overall dimensions of products : 148mm(长)*91mm (宽) *29mm (厚)

主芯片型號 Main chip model : T113-S

功耗電流 Power consumption current: 1A (rated) , 3A (Max)

主頻率 Dominant frequency : 1.2GHz

工作溫度 operating temperature: -40°C~+85°C

內存 Memory : 256MB DDRIII SDRAM

環境濕度 Ambient humidity: ≤98% (at45°C) , 65±5% (rated)

存儲空間 Storage space : 128MB NAND Flash

靜態電流 quiescent current: less than 3mA

操作系統 Operating system : Linux 中/英文版

儲藏溫度 Storage temperature: -30~+85°C

關機電流 Shutdown current: 300mA (Clock is on)

工作高度 Working height : 在15000feet (4573米) 高度下可正常工作

工作電壓 running voltage : 9-16V, 14.4V (rated)

摔落測試 Drop test : 設備從30inches (76cm) 高度摔落后可正常工作

充電電流 charging current: ≤ 1.5A. 當USB充電電流> 3A時,系統快充單元的智能芯片將自動啟動電路保護,將充電電流控制在1.5A以下,保護手機充電過載.
≤1.5A. when the USB charging current is > 3A, the host computer of the radio and receiver should start the circuit protection function to control the current below 1.5A to avoid burning the product.



* 長按2秒進入系統頁面
Press and hold for 2 seconds to enter the system page
* 短按回系統主頁面HOME
Short press back to the HOME page of the system

語音喚醒
Voice awakening

* 來電接聽
Call answering

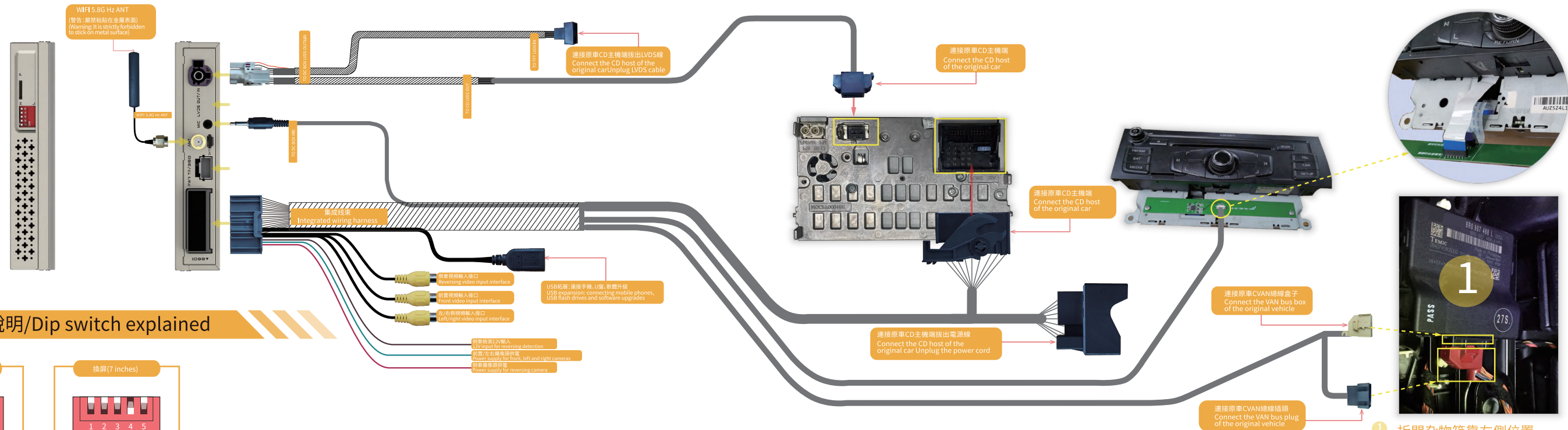
* 結束通話
End call

* 系統音量增加
System volume increases

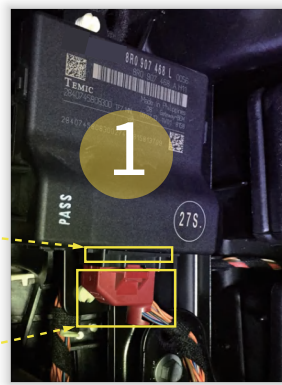
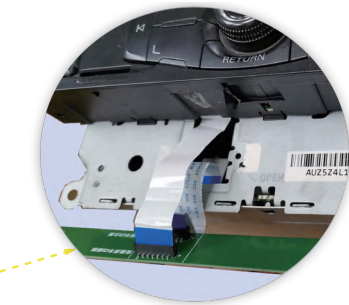
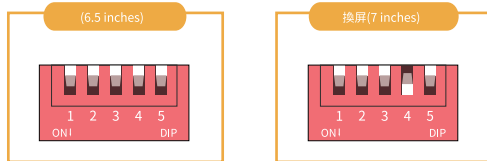
* 系統音量減小
System volume decreases



NO.4 2G A4/Q5 車型連線示意圖 / Schematic diagram of connection



NO.4-1 撥碼說明/Dip switch explained



1 拆開杂物箱靠左側位置
Remove the left side of the glove box



* 旋鈕控制系統APP
knob control system APP
* 按下進入APP功能
Press to enter the APP function

* 系統音量增加
System volume increases

* 系統音量減小
System volume decreases

語音喚醒
Voice awakening

* 來電接聽
Call answering

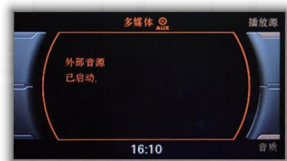
* 結束通話
End call

* 長按2秒進入系統頁面
Press and hold for 2 seconds to enter the system page
* 短按回系統主頁面HOME
Short press back to the HOME page of the system



1 2 3 4

* 方向鍵控制光標移動
The arrow keys control
cursor movement



* 進入原車AUX通道, 系統自動切換頁面
Enter the AUX channel of the original car,
and the system automatically switches pages

* 控制媒體下一曲
Control the media down



* 語音喚醒
Voice awakening

* 來電接聽
Call answering

* 結束通話
End call

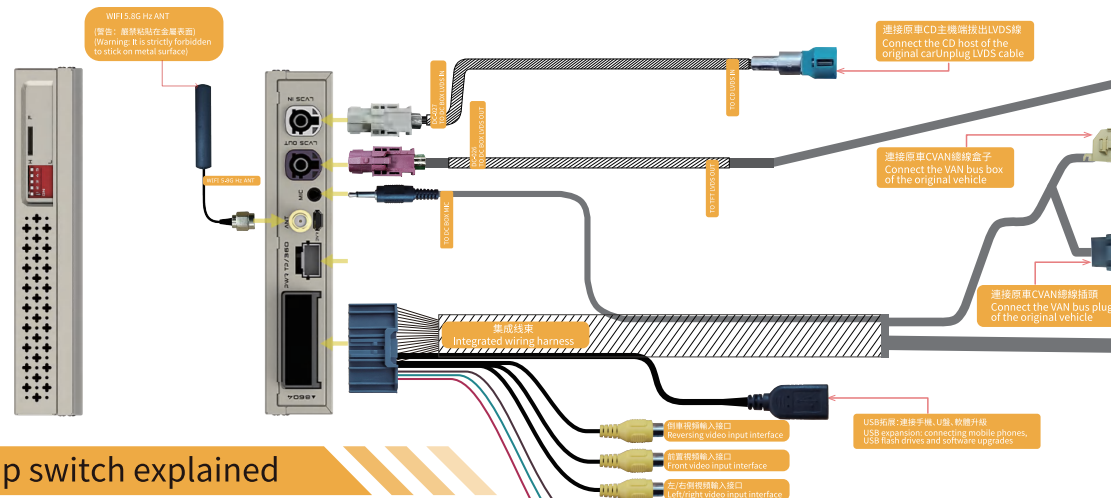
* 控制媒體上一曲
Control the media up

* 返回上一級
Return to the previous level

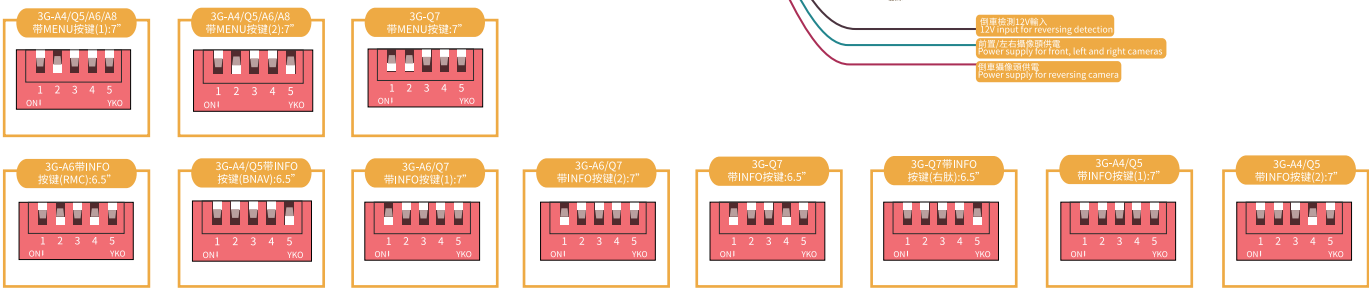
* 旋鈕控制系統APP
knob control system APP
* 按下進入APP功能
Press to enter the APP function

● 進入本系統前請先選擇AUX模式, 然後再進入系統操作
Please select AUX mode before entering the system,
and then enter the system operation

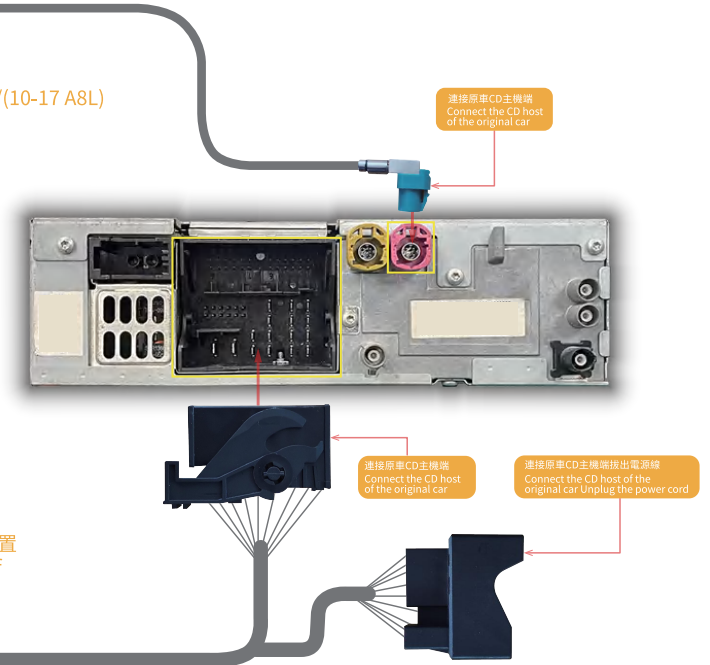
NO.6 3G MMI 車型連線示意圖 / Schematic diagram of connection



NO.6-1 撥碼說明/Dip switch explained



- 1 (12-16 A6 RMC)/(08-11 A6L)/(10-17 A8L) 拆開空調面板后側位置 Remove the rear side of the air conditioning panel
- 2 12'A4/Q5/A6L/A7 拆開杂物箱靠上側位置 Remove the upper position of the glove box
- 3 10-15 Q7 拆開方向盤下護蓋左上側位置 Remove the upper left side of the steering wheel lower cover





* 系統音量增加
System volume increases

* 系統音量減小
System volume decreases

* 語音喚醒
Voice awakening

* 來電接聽
Call answering

* 結束通話
End call

* 旋鈕控制系統APP
knob control system APP
* 按下進入APP功能
Press to enter the APP function

1 2 3 4

* 方向鍵控制光標移動
The arrow keys control cursor movement

* 語音喚醒
Voice awakening

* 來電接聽
Call answering

* 結束通話
End call

* 長按2秒進入系統頁面
Press and hold for 2 seconds to enter the system page
* 短按回系統主頁面HOME
Short press back to the HOME page of the system

* 控制媒體下一曲
Control the media down

* 返回上一級
Return to the previous level



* 系統音量增加
System volume increases

* 系統音量減小
System volume decreases

* 進入系統前請先進入原車AUX通道
Please enter the aux channel of the original car before entering the system

* 控制媒體上一曲
Control the media up

● 進入本系統前請先選擇AUX模式, 然後再進入系統操作
Please select AUX mode before entering the system,
and then enter the system operation



* 語音喚醒
Voice awakening

* 來電接聽
Call answering

* 結束通話
End call

* 系統音量增加
System volume increases

* 系統音量減小
System volume decreases

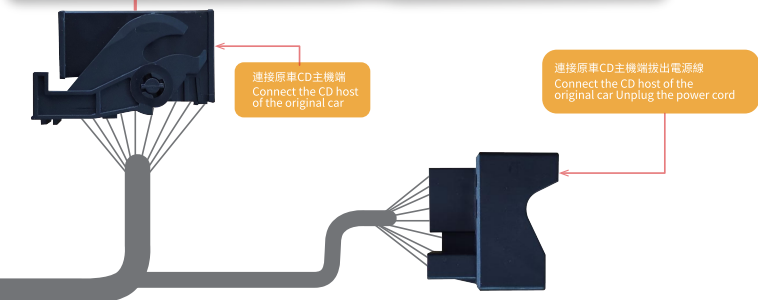
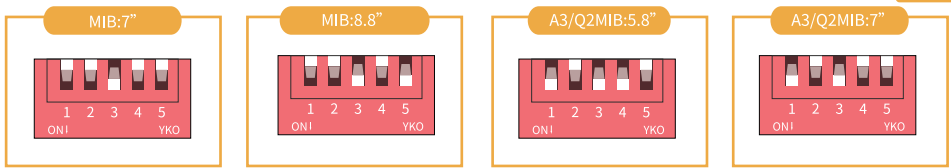
● 進入本系統前請先選擇AUX模式, 然後再進入系統操作
Please select AUX mode before entering the system,
and then enter the system operation



NO.9 MIB1-MIB2 車型連線示意圖 / Schematic diagram of connection



NO.9-1 撥碼說明/Dip switch explained





* 語音喚醒
Voice awakening

* 來電接聽
Call answering

* 結束通話
End call

* 控制媒體上一曲
Control the media up

* 系統音量增加
System volume increases

* 系統音量減小
System volume decreases

* 控制媒體下一曲
Control the media down

* 長按2秒進入系統頁面
Press and hold for 2 seconds to enter the system page
* 短按回系統主頁面HOME
Short press back to the HOME page of the system

* 語音喚醒
Voice awakening

* 來電接聽
Call answering

* 結束通話
End call



* 旋鈕控制系統APP
knob control system APP
* 按下進入APP功能
Press to enter the APP function

● 進入本系統前請先選擇AUX模式, 然後再進入系統操作
Please select AUX mode before entering the system, and then enter the system operation

* 返回上一級
Return to the previous level

* 進入原車AUX通道, 系統自動切換頁面
Enter the AUX channel of the original car, and the system automatically switches pages

1 2 * 方向鍵控制光標移動
The arrow keys control cursor movement

* 系統音量增加
System volume increases

* 系統音量減小
System volume decreases



* 控制媒體上一曲
Control the media up

* 控制媒體下一曲
Control the media down



- * 語音喚醒
Voice awakening
- * 來電接聽
Call answering
- * 結束通話
End call
- * 控制媒體上一曲
Control the media up
- * 系統音量增加
System volume increases
- * 系統音量減小
System volume decreases
- * 控制媒體下一曲
Control the media down
- * 長按2秒進入系統頁面
Press and hold for 2 seconds to enter the system page
- * 短按回系統主頁面HOME
Short press back to the HOME page of the system



* 觸摸控制APP相關功能 Touch control APP related functions

- * 系統音量增加
System volume increases
- * 系統音量減小
System volume decreases
- * 控制媒體上一曲
Control the media up
- * 控制媒體下一曲
Control the media down

提示

進入本系統前請先斷開原車與手機藍牙連接並忽略藍牙設備，然後在原車藍牙電話搜索“DC_audio BT-*****”並連接此設備，以作為本系統的聲音通道，最後切換系統再進行其它操作。

Before entering the system, please disconnect the Bluetooth connection between the original vehicle and the mobile phone and ignore the Bluetooth device. Then search for "DC_audio BT - *****" on the original vehicle's Bluetooth phone and connect this device as the sound channel of the system. Finally, switch the system for other operations.